

# Healthy Housing for Older Adults:

Housing as a Platform for Community  
Health Systems

Nancy Rockett Eldridge, Executive Director

June 7, 2016

# SASH<sup>SM</sup>

SUPPORT AND SERVICES  
— AT HOME —  
*a caring partnership*

National Center for  
**HEALTHY HOUSING**

# Why SASH?



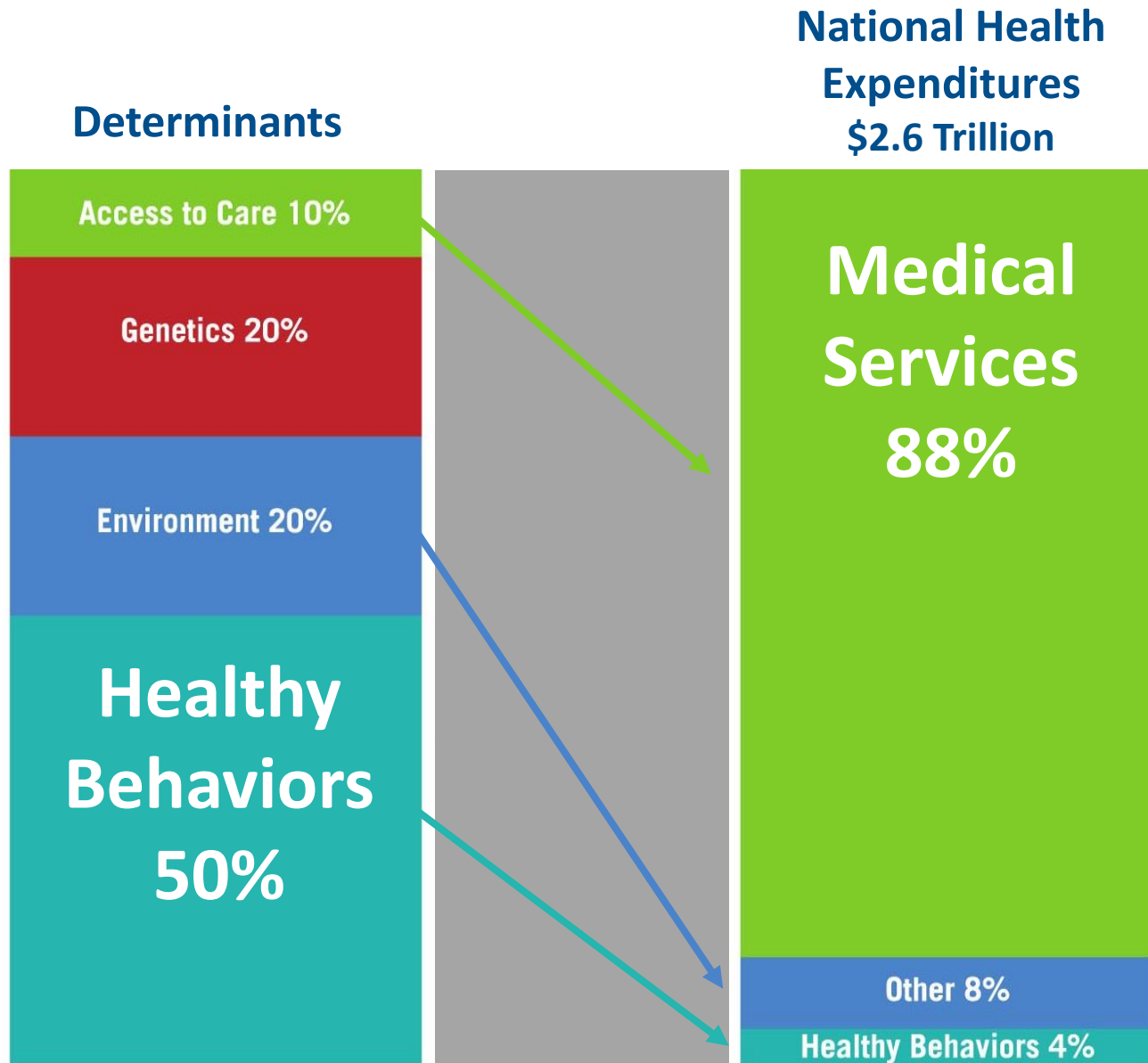
# Seniors Aren't Going Anywhere



- Preference to stay at home
- Lack of care setting alternatives
- Lack of production of affordable housing
- Fair Housing Protections

# Spending Mismatch: Health Care and Other Key Determinants of Health

National Center for  
**HEALTHY HOUSING**



*Source: NEHI. 2012.*

# Behavior Begins at Home

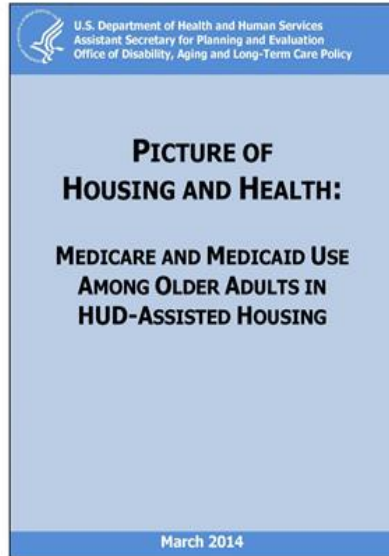


National Center for  
**HEALTHY HOUSING**



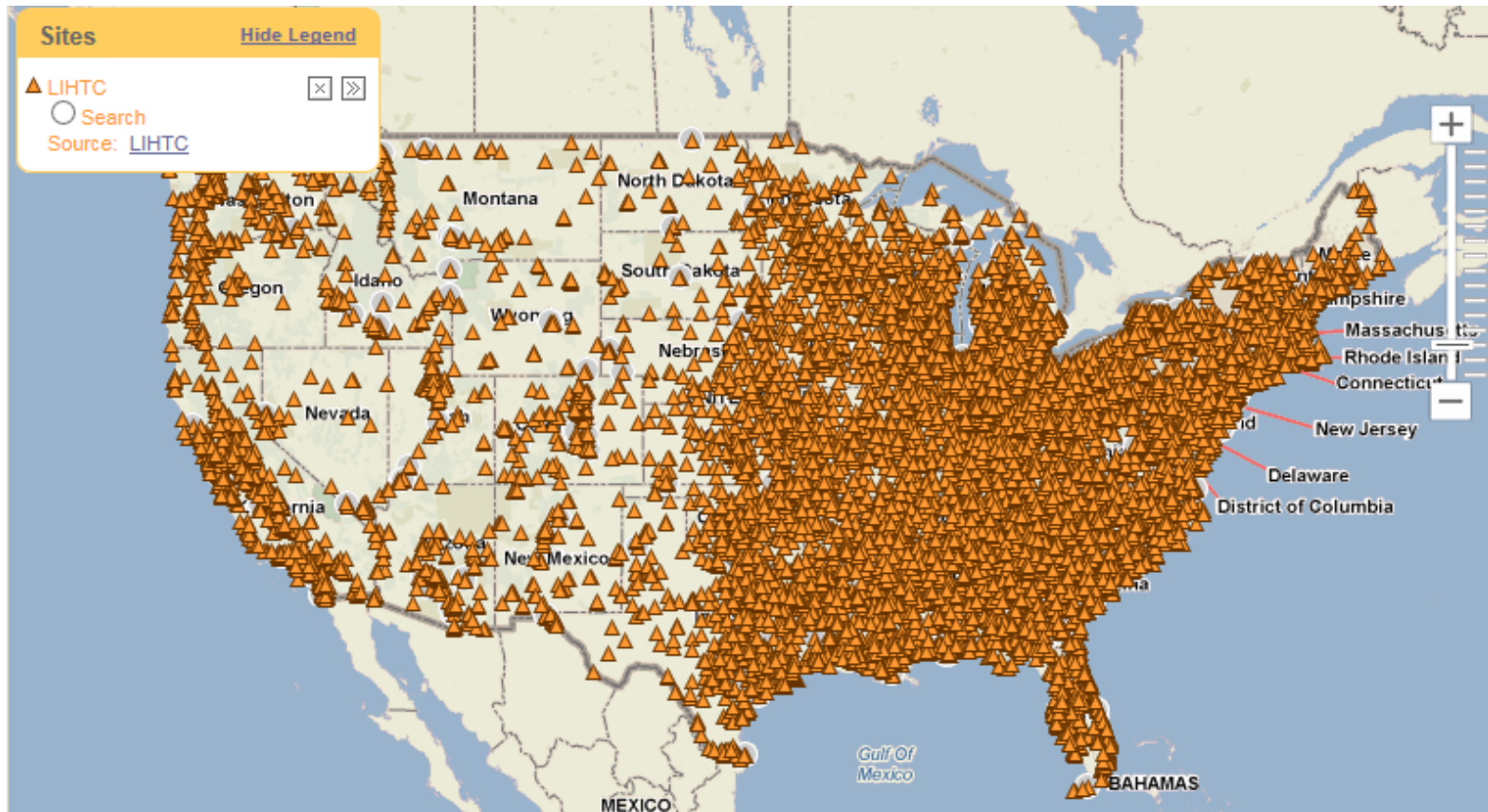
# Reaching the Highest Need

## Social Circumstances and Health



- Starting with HUD assisted housing makes sense
- Build out from there.....

# Housing is an Existing Decentralized Network

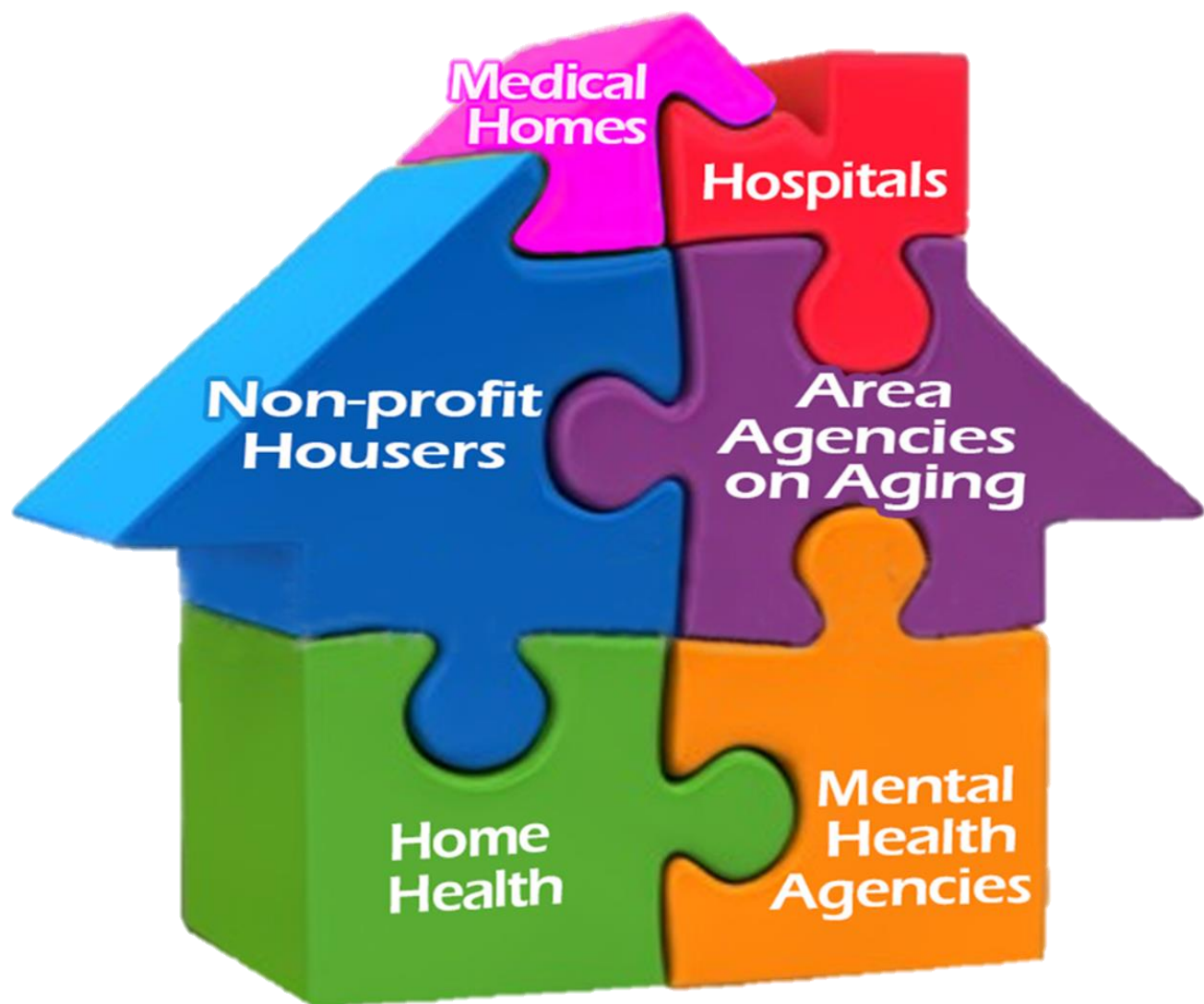


## The solution:

Target existing sites with high needs;  
Build a strong infrastructure;  
Use that platform to reach community dwellers.



# SASH: A Team Effort



# Core Elements

- Uniform Assessment
- Shared Care Plan
- Centralized Database
- Evidence Based Practices
- Prevention

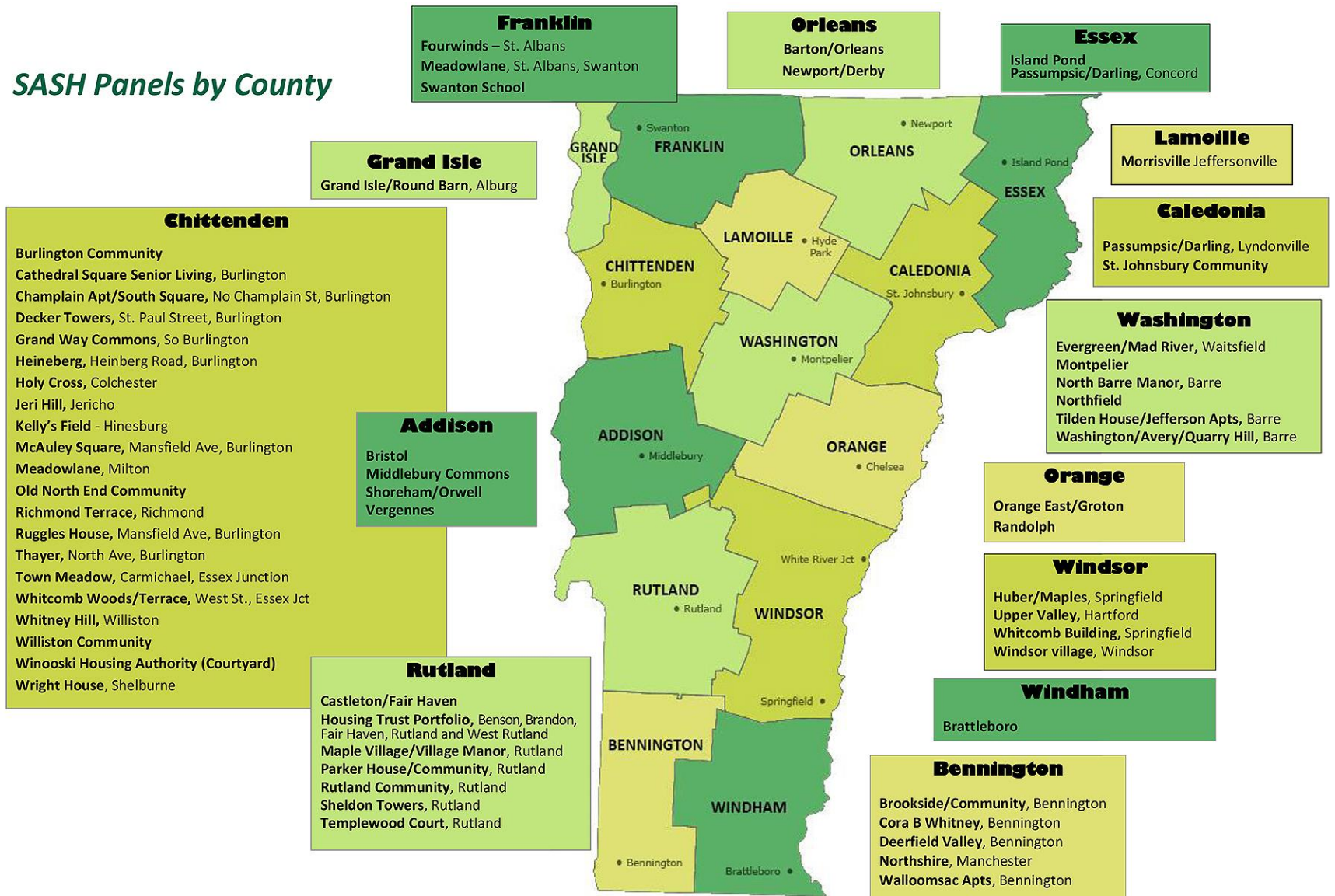


# Systems Change

- Panels/Population Health
- Capitated Payments/Global Budget
- Flexible funding
- No Discharge
- Budget Neutral
- Scale
- Agnostic Model



## SASH Panels by County



# Statewide Systems



# What's Next: Building on the Platform



- Tele-health
- Adding new interventions
- Build workforce
- Getting systems change models to scale nationally



# HUD Supportive Services Demo

- 40 intervention sites/40 control sites
- \$15M: 5 years  
*FR-5900-N-22*



# Building a System

- Continual team support vs episodic care
- Population health AND individual targeting
- Wherever a person calls home
- Services come to seniors
- Cost efficient AND better care
- Build a system that starts by addressing people's needs



# Contact Information

Nancy Rockett Eldridge, Executive Director, NCHH  
[neldridge@nchh.org](mailto:neldridge@nchh.org)

[www.SASHVT.org](http://www.SASHVT.org)

[www.nchh.org/program/olderadults.aspx](http://www.nchh.org/program/olderadults.aspx)

[www.nchh.org](http://www.nchh.org) ♦ [@NCHH](https://twitter.com/NCHH) ♦ [facebook.com/HealthyHousing](https://facebook.com/HealthyHousing)

**National Center for**  
**HEALTHY HOUSING**