



# National Center for Healthy Housing

## National Healthy Homes Training Center and Network *Essentials for Healthy Homes Practitioners Course*

### Agenda

#### Day 1

- |          |   |
|----------|---|
| 8:00 AM  | Continental Breakfast                         |
| 8:30     | Welcome and Introductions                     |
| 9:00     | Overview – Making the Connection              |
| 10:15    | Overview – Housing Statistics and Codes       |
| 11:30    | Start With People                             |
| 12:00 PM | <i>Lunch</i>                                  |
| 12:45    | House As a System                             |
| 1:30     | Keep It Dry                                   |
| 3:00     | Keep It Clean                                 |
| 4:00     | Keep It Pest-Free - Introduction              |
| 4:45     | Review of Action Plan                         |
| 5:00     | <i>Adjourn Day 1 of Essentials Course</i>     |
| 5:00     | Credential Review Session – Part 1 (optional) |
| 5:45     | <i>Adjourn Credential Review Session</i>      |

*Building a lead-safe and healthy home environment for all children*



# National Center for Healthy Housing

## National Healthy Homes Training Center and Network *Essentials for Healthy Homes Practitioners Course*

### Agenda

#### Day 2

- |          |  |
|----------|--|
| 8:00 AM  | Continental Breakfast  |
| 8:30     | Review of Study Guide and Action Plan  |
| 9:00     | Keep It Pest-Free (cont.)  |
| 10:30    | Keep it Ventilated   |
| 11:30    | Keep it Safe   |
| 12:00 PM | <i>Lunch</i>   |
| 12:45    | Keep It Contaminant-Free   |
| 2:30     | Keep It Maintained   |
| 3:00     | Making It Work – Visual Assessment   |
| 3:45     | <i>Adjourn Essentials Course</i>   |
| 4:00     | Credential Review Session – Part 2 (Optional)  |
| 4:30     | Credential Exam (for those seeking to get Healthy <i>Homes Specialist Credential</i> ) |
| 6:30     | <i>Complete Exam</i>   |

*Building a lead-safe and healthy home environment for all children*

10227 WINCOPIN CIRCLE, SUITE 200, COLUMBIA, MARYLAND 21044 ♦ 410.992.0712 ♦ FAX 410.715.2310  
[www.centerforhealthyhousing.org](http://www.centerforhealthyhousing.org)



National Center for  
Healthy Housing

# Fact Sheet



September 2008

## The National Healthy Homes Training Center and Network

The National Healthy Homes Training Center and Network (Training Center) is operated by the National Center for Healthy Housing and brings together public health and housing practitioners to promote practical and cost-effective methods for making homes healthier. It also serves as a forum for exchanging information on new research and best practices. Among the Training Center's activities are:

**TRAINING** The Training Center offers six healthy homes courses, including **Essentials for Healthy Homes Practitioners**, its flagship course (see reverse side for course descriptions). The Training Center has trained more than 3,000 people since its inception in 2004. Nearly 95% of Training Center participants say that they would recommend the course to a colleague (see [www.healthyhomestraining.org/Evaluation/](http://www.healthyhomestraining.org/Evaluation/)).

**CREDENTIALING** In partnership with the National Environmental Health Association, the Training Center offers the **Healthy Homes Specialist Credential**, which recognizes health and housing professionals who demonstrated knowledge and abilities in the area of healthy homes. Over 200 individuals have applied for the credential since June 2007 (see [www.healthyhomestraining.org/Credential](http://www.healthyhomestraining.org/Credential)).

**TOOLS AND RESOURCES** The Training Center website offers extensive resources for policymakers and practitioners including profiles of housing conditions in many jurisdictions and information about how to use your housing code to improve the quality of housing in your community.

**The National Healthy Homes Clearinghouse** includes over 600 publications on healthy housing, including the latest scientific research on practical measures to reduce environmental health and safety hazards in the home environment (see [www.healthyhomestraining.org/Key\\_References.htm](http://www.healthyhomestraining.org/Key_References.htm)).

### What is a Healthy Home?

A **healthy home** is designed, constructed, maintained, or rehabilitated in a manner that supports the health of residents. A growing body of evidence links housing conditions to health outcomes such as asthma, lead poisoning, lung cancer, and unintentional injuries.

Any home may have health hazards. Creating healthier housing promotes the growth and development of our children and can save billions of dollars in health care costs.

### STUDENTS SAY TRAINING CHANGES THEIR WORK

During regular inspections for lead hazards, I have used the time to educate tenants on the dangers of smoking inside the home and around children as well as discussing safety inside the home. I have discussed new ways with owners to approach pest management and how working together with the tenants we can improve results.

—William Messick, *Health and Hospital Corporation (IN)*

My staff LOVED this training. They liked it so much they've pressed for others to be able to attend. It has been beneficial, and they've all commented to me that they are able to assess a client's home more fully since they learned the Healthy Homes Approach. They—and I—enjoyed the time spent with people working in the housing side of our agency.

—Kelley Murphy,  
*Marion County Health Dept. (IN)*

We are including your healthy homes survey on our laptops for our field work.

—Jane Prestigomo, *City of Houston Dept. of Health and Human Services/Children's Environmental Health Bureau (TX)*

With this additional training and information, I consider myself as knowledgeable as there is in my jurisdiction regarding indoor air/housing and other related issues. I am more confident responding to issues and giving my thoughts for resolutions.

—Marco Palmeri,  
*Plainville Health Dept. (CT)*

## Training Center Courses

A range of training opportunities are available through the Training Center, including its flagship course, “Essentials for Healthy Homes Practitioners,” a course for professionals working in the areas of affordable housing, community service delivery, and environmental public health.

Please check our website periodically for new courses. For a complete schedule of courses and their locations, visit [www.healthyhomestraining.org](http://www.healthyhomestraining.org).

## Course List

### ■ ESSENTIALS FOR HEALTHY HOMES PRACTITIONERS

This two-day foundational training course is ideal for individuals who provide health or inspection services of any type. The training will help you understand the connection between health and housing and how to take a holistic approach to identifying and resolving problems, which threaten the health and well-being of residents. Course materials are also available in Spanish.

### ■ LAUNCHING A HEALTHY HOMES INITIATIVE

This one-day course is targeted toward health and housing leaders seeking to establish healthy homes programs and activities in their communities.

### ■ BUILDING HEALTHY HOMES

In partnership with the NeighborWorks Training Institute, this course is for architects, housing developers, and property managers. It provides practical training in techniques to address moisture management, ventilation, energy conservation, and site and material selection.

### ■ ON-LINE PEDIATRIC ENVIRONMENTAL HOME ASSESSMENT FOR NURSES

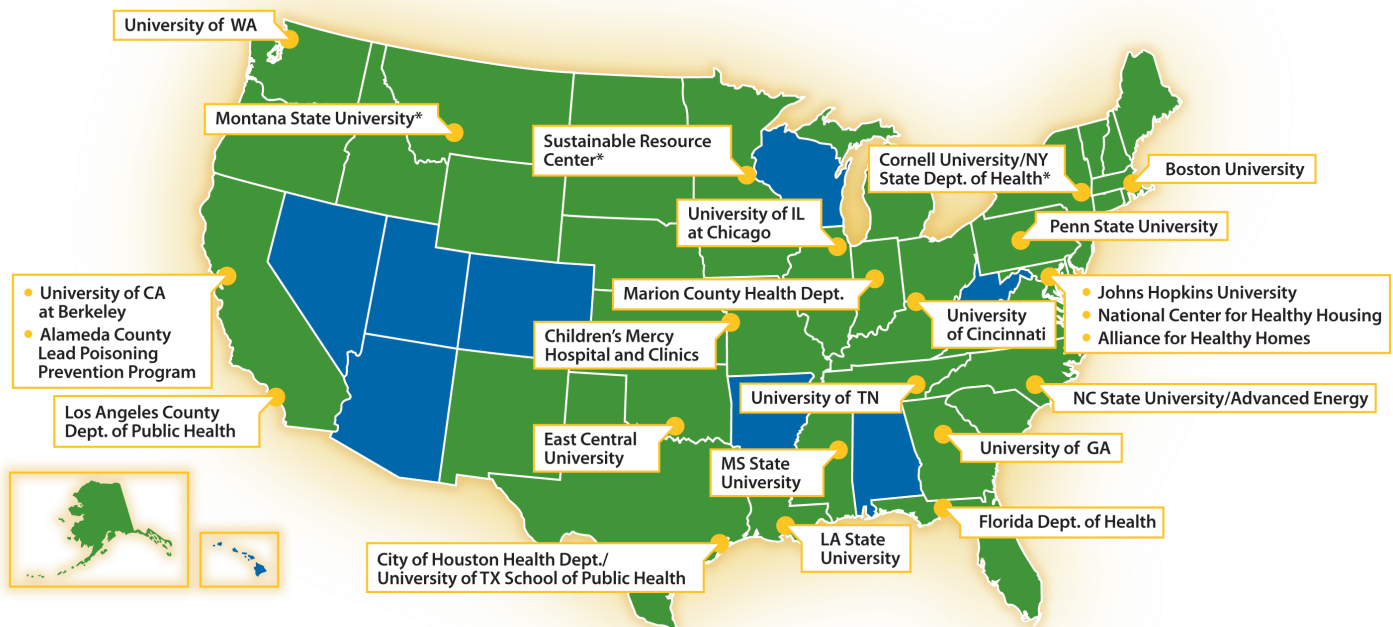
This two-hour, online training course prepares public health and visiting nurses to conduct a comprehensive healthy home assessment with their clients and to prepare a corresponding action plan geared toward remedying hazards found during the assessment.

### ■ INTEGRATED PEST MANAGEMENT IN MULTI-FAMILY HOUSING

This one-day course cross-trains public housing authority staff, residents, and pest management professionals to safely and effectively resolve pest issues (including cockroaches, mice, and other vermin) in multi-family housing.

## Training Partners

The Training Center is operational across the country and provides training through high-caliber partners.



### \*PENDING PARTNERS

See [www.healthyhomestraining.org/about.hhtc.htm](http://www.healthyhomestraining.org/about.hhtc.htm) for current list.

### Legend

- States covered
- States not covered



**National Center for  
Healthy Housing**

# National Healthy Homes Training Center and Network



## Healthy Homes Resources

### Healthy Homes Training Calendar and Courses

NCHH hosts a clearinghouse for course offerings related to healthy homes such as lead, radon, asbestos, mold, energy efficient, and building sciences. See [www.nchh.org/calendar.aspx](http://www.nchh.org/calendar.aspx). Training providers can post their course offerings at this site and the public can search for courses in their area.

Through the National Healthy Homes Training Center & Network, the National Center for Healthy Housing (NCHH) offers the following healthy homes courses. See [www.healthyhomestraining.org](http://www.healthyhomestraining.org) for more information on courses and for course materials.

- *Essentials for Healthy Homes Practitioners* – 2-day
- *Launching a Healthy Homes Initiative* – 1-day
- *Healthy Homes for Community Educators* – 1-day
- *Pediatric Environmental Home Assessment* – On-line
- *IPM for Multi-Family Housing* – 1-day

### Healthy Homes References & Clearinghouse

- **Searchable database** of latest research at [www.nchh.org/clearinghouse/](http://www.nchh.org/clearinghouse/).
- **American Housing Survey** for housing-related problems nationally, regionally, and in 46 large cities at [www.healthyhomestraining.org/ahs](http://www.healthyhomestraining.org/ahs).
- **Health-Related Laws and Codes** including state and local housing codes at [www.healthyhomestraining.org/codes](http://www.healthyhomestraining.org/codes).
- **Integrated Pest Management** for detailed information on IPM in housing at [www.healthyhomestraining.org/ipm](http://www.healthyhomestraining.org/ipm).
- **Lead-Safe Work Practices** for information on working with lead-based paint, renovation, repair and painting at [www.healthyhomestraining.org/lswp](http://www.healthyhomestraining.org/lswp).

### Healthy Homes Specialist Credential

Visit [www.healthyhomestraining.org/Credential/](http://www.healthyhomestraining.org/Credential/) for information on the NEHA-NCHH Healthy Homes Specialist Credential including useful references to prepare for the exam. The total fee becomes \$150 to \$210. You can take the exam and complete the visual survey exercise at the end of the *Essentials for Healthy Homes Practitioners* courses. You can also take the exam at a LaserGrade Testing Center.

### Getting the Latest Word

- **Healthyhomes.net listserve** is for people working on healthy homes. It is managed by the Alliance for Healthy Homes (AFHH). Subscribe at [healthyhomesnet-on@mail-list.com](mailto:healthyhomesnet-on@mail-list.com)
- **NCHH Newsletter:** A quarterly newsletter on NCHH activities and related news. Subscribe at [www.nchh.org/eNewsletter.aspx](http://www.nchh.org/eNewsletter.aspx).
- **AFHH Newsletter:** A monthly newsletter on news that impacts the healthy homes community. Subscribe at [www.afhh.org/forms/alert\\_subscribe.asp](http://www.afhh.org/forms/alert_subscribe.asp).
- **Monthly Conference Calls:**
  - Expanding from Lead to Healthy Homes – First Monday at 3:00 ET [www.healthyhomestraining.org/transitions](http://www.healthyhomestraining.org/transitions).
  - Translating Research into Healthy Homes Improvements – Third Monday at 3:00 ET [www.healthyhomestraining.org/research](http://www.healthyhomestraining.org/research).

### Find a Healthy Homes Training Partner

To find your healthy homes training partner for your state or for more information, go to [www.healthyhomestraining.org/About\\_HHTC.htm](http://www.healthyhomestraining.org/About_HHTC.htm).

**For more information on any of these topics**, contact: Susan Aceti at 443-539-4153 or [saceti@nchh.org](mailto:saceti@nchh.org). Funding for this course is provided by the U.S. Environmental Protection Agency (EPA), the U.S. Centers for Disease Control and Prevention (CDC), and the U.S. Department of Housing and Urban Development (HUD).







National Center for  
Healthy Housing

# Fact Sheet



September 2008

## Healthy Home Specialist Credential

Children spend more than 90 percent of time indoors—making the home environment one of the top places where they can be exposed to health and safety hazards. To protect their families, parents and caregivers seek advice and help in finding and eliminating hazards in and around the home.

Until now, there has not been a trained workforce dedicated to healthy homes issues. To fill the training and education gap, the National Center for Healthy Housing and the National Environmental Health Association (NEHA) created the Healthy Homes Specialist Credential. The first and only credential of its kind, the Healthy Homes Specialist credential signifies that an individual has demonstrated competency in the basics of the seven principles and how to put them into practice in homes.

“Realtors, home inspectors, energy auditors, pest management professionals, and others can save lives if they are armed with greater awareness of hazards in the home environment. This Credential provides an outstanding marketing opportunity for these professionals and more importantly, enables families to access qualified professionals who can help them take steps to protect their families.”

—Rebecca Morley, Executive Director of the National Center for Healthy Housing.

“The home is where we live. There is no environment that is more important. By advancing our ability to understand what it takes to create a healthy home, this credential truly pushes progress in the direction of providing increasing numbers of people with a safe and healthful environment.”

—Nelson Fabian, National Environmental Health Association Executive Director and CEO.

The Healthy Homes Specialist Credential is designed especially for:

### BUSINESSES

- Certified Home Inspectors
- Pest management Professionals
- Energy Auditors
- Lead-Based Paint Inspectors/Risk Assessors
- Asbestos, Radon, and Mold Professionals
- Realtors
- Homebuyer Counselors
- Green Builders, Architects, and Developers
- Property Management Companies

### GOVERNMENT AGENCIES

- Environmental health professionals
- Code Inspectors
- Visiting nurses
- Housing Rehabilitation Specialists

To achieve the credential, individuals must complete a comprehensive exam on the seven principles of healthy housing, which include keeping homes: Dry, Clean, Pest-Free, Contaminant-Free, Ventilated, Safe, and Maintained. Individuals seeking the Healthy Homes Specialist credential must:

- 1) Be at least 21 years of age;
- 2) Have five years of experience in housing, environmental health or public health;
- 3) Achieve a minimum score of 70 percent on the qualifying examination; and
- 4) Successfully complete an on-line home assessment exercise.

Apply for the HHS credential by completing an application downloadable at [www.neha.org/credential/HHS](http://www.neha.org/credential/HHS). Cost of applying for and taking the HHS exam is \$150 NEHA members or \$205 non-members. For more information on this credential you can contact NEHA's Credentialing Staff at (303) 756-9090 ext. 339 or ext. 337.

Candidates should review on-line references at [www.healthyhomestraining.org/Credential/References.htm](http://www.healthyhomestraining.org/Credential/References.htm) to prepare for the exam. They may also want to take the Training Center's two-day *Essentials for Healthy Homes Practitioners Course* to prepare for the exam. The exam is typically offered at the end of the course.









## Application for Healthy Homes Specialist (HHS) Credential

### Step 1. Name and Address of Applicant *(Please print or type.)*

Name: \_\_\_\_\_

Business Name: \_\_\_\_\_

Business Address: \_\_\_\_\_

Street Address

Business Address: \_\_\_\_\_

City

State

ZIP

Home Address: \_\_\_\_\_

Street Address

Home Address: \_\_\_\_\_

City

State

ZIP

Daytime Telephone: \_\_\_\_\_ Home Telephone: \_\_\_\_\_

Fax Number: \_\_\_\_\_ E-mail: \_\_\_\_\_

NEHA Membership Number (if applicable): \_\_\_\_\_ Preferred Address to Receive Mail: ☐ Business

☐ Home

### Step 2. NEHA Credential Options, Fees and Payment Information

<u>Credential Name</u>	<u>Member</u>		<u>Non-Member</u>	<u>Subtotal</u>
____ Application Fee Healthy Homes Specialist Credential	\$25	or	\$50	\$ ____
____ Exam Fee Healthy Homes Specialist Credential	\$95	or	\$125	\$ ____
____ Assessment Exercise Fee* Healthy Homes Specialist	\$30	or	\$30	\$ ____
____ <b>YES!</b> I would like to join NEHA and take advantage of the member fees above. In addition to the enclosed credential fee(s) payment, I have included my <b>\$95</b> yearly membership fee.				\$ ____
____ <b>YES!</b> I wish to take the exam within four weeks of this application. I have enclosed a <b>\$25</b> expedite fee for this service.				\$ ____
			<b>TOTAL</b>	\$ ____

#### Payment Options:

\_\_\_\_ Check/Money Order      \_\_\_\_ Visa      \_\_\_\_ Mastercard *(check one)*

Credit Card # \_\_\_\_\_ Exp.: \_\_\_\_\_

Signature: \_\_\_\_\_

#### CRITERIA TO OBTAIN THE CREDENTIAL: You must:

- 1) be 21 years old; *and*
- 2) verify using the Work Experience Verification form Five (5) years of experience in housing, environmental health, or public health; *and*
- \*3) Upon passing the examination you must complete an assessment exercise through the National Center for Healthy Housing (NCHH). To access the assessment you must go to: [www.healthyhomestraining.org/credential/](http://www.healthyhomestraining.org/credential/)

### Step 3. Administration Options

- ☐ **OPTION ONE – NATIONAL CONFERENCE** The exam is administered each year at the NEHA Annual Educational Conference and Exhibition. The next conference is scheduled for June 22-25, 2008 in Tuscon, AZ.
- ☐ **OPTION TWO – COMPUTER TESTING AT LASERGRADE** These exams are available on computer at LaserGrade testing centers in the United States. For this option an additional fee of \$80.00 will apply. You will need to pay the \$45.00 fee directly to LaserGrade upon taking the exam. For information regarding the center nearest you, please visit [www.lasergrade.com/locate.shtml](http://www.lasergrade.com/locate.shtml) or contact the NEHA Credentialing Department at (303) 756-9090 ext. 337 or ext. 339.
- ☐ **OPTION THREE – National Healthy Homes Training Center**

Exam Date: \_\_\_\_\_ Proctor Name: \_\_\_\_\_

Name of Training Center: \_\_\_\_\_

Training Center Location: \_\_\_\_\_  
City State

Training Center Telephone Number: \_\_\_\_\_

### Step 4. Proof of Age

Please provide proof of age (i.e. copy of driver's license, passport, etc.)

### Step 5. Statement of Affirmation

I, \_\_\_\_\_, do solemnly swear and affirm that I am the applicant named in this application; that I have made or read the contents hereof, and to the best of my knowledge and belief, the foregoing statements and answers are true in substance and effect, and are made in good faith.

\_\_\_\_\_  
*Signature of Applicant*

\_\_\_\_\_  
*Date*

### Step 6. NEHA Code of Ethics for NEHA Credentialed Professionals

As an environmental professional, credentialed by the National Environmental Health Association, I hereby acknowledge, accept, and profess to abide by the following code of conduct and ethics:

- As long as my credential is in an active status, I shall endeavor to keep myself current and informed and satisfy any continuing education requirements that may be in effect for my credential.
- I will proudly represent my credentialed status and the credential itself to my professional peers, and to the public I serve.
- In the course of performing my duties, I will conduct myself in a professional manner befitting of my credentialed status.
- For the sake of elevating the recognition and status of my field, I will actively encourage my professional colleagues to consider earning this credential for themselves.
- I will do nothing to undermine, detract from, or otherwise cause to develop any damaging associations with respect to this credential. I accept that any activity on my part that will cause this credential any measure of injury serves as a breach and a failure on my part to uphold this code of ethics. Moreover, I accept that such action, for which I might be responsible, could result in the revocation of my credential.
- I commit that my professional goal is to serve humankind by doing whatever I am able to do in the course of carrying out my professional responsibilities to maintain and provide a healthful environment for all.

\_\_\_\_\_  
*Signature of Applicant*

\_\_\_\_\_  
*Date*

Step 7. Work Experience Verification Form

**TO BE COMPLETED BY A THIRD PARTY**

The following form must be used to verify a minimum of five (5) years work experience in housing, environmental health or public health by the applicant. **Verifications may be provided by a supervisor, human resources department, local/county/state health department, or a Healthy Homes Specialist certified co-worker that works with you.**

I verify that \_\_\_\_\_ has a minimum of five (5) years work experience  
*(Applicants Name)*  
in housing, environmental health or public health.

**Please note: Individuals providing verification of the applicant's work experience may be contacted by the National Environmental Health Association (NEHA) during a random application audit.**

Person verifying applicant's work experience in housing, environmental health or public health please complete the following and return form to applicant:

NAME OF THIRD PARTY(Print full name)

TITLE OF THIRD PARTY

NAME OF COMPANY OF THIRD PARTY

STREET ADDRESS OF THIRD PARTY

CITY

STATE

ZIP

DAYTIME TELEPHONE OF THIRD PARTY

EMAIL ADDRESS OF THIRD PARTY

SIGNATURE OF THIRD PARTY

DATE

**Step 8. Checklist for Credential Application** *(Please place a check mark in all boxes that apply.)*

**ALL CREDENTIAL APPLICANTS MUST INCLUDE THE FOLLOWING WITH THIS APPLICATION:**

- ☐ Completed Application (Steps 1 through 8 must be completed. Applications that are incomplete are subject to delay in processing. If you need help in completing the application, please contact NEHA at 303-756-9090, ext. 339 or ext. 337 or e-mail [credentialing@neha.org](mailto:credentialing@neha.org))
- ☐ Application Fees, Exam Fees, and Assessment Exercise Fees
- ☐ Proof of age (i.e. Copy of Driver's license or birth certificate)
- ☐ Completed Work Experience Verification Form

**Step 9. Mail your completed application with payment to:**

National Environmental Health Association  
Attn: Credentialing Department  
720 South Colorado Blvd., Ste. 1000-N  
Denver, CO 80246

If you have any questions or need assistance completing this application, please contact the NEHA Credentialing Department at:

Phone: 303-756-9090, ext. 339 or ext. 337

Fax: 303-691-9490

E-mail: [credentialing@neha.org](mailto:credentialing@neha.org)

Internet: [www.neha.org](http://www.neha.org)



## Instructions for Students to Obtain Continuing Education Contact Hours for the Essentials for Healthy Homes Practitioners Course

The National Center for Healthy Housing offers the Essentials for Healthy Homes Practitioners course to professionals from a variety of fields within public health, environmental health and housing. This course has been approved for continuing education hours for the following professionals:

Occupation	# of Contact Hours	Accrediting Organization	Requirements for CEU Award
Public Health Nurses	12.75 contact hours	Ohio Nurses Association  <i>- This continuing nursing education activity was approved by the Ohio Nurses Association (OBN-001-91), an accredited approver by the American Nurses Credentialing Center's Commission on Accreditation.</i>	1. Attend entire training. 2. Complete and submit evaluation form (you must sign and date the front page). 3. NCHH provides a signed certificate of completion showing the number of earned contact hours.  <i>- All planners and presenters have certified that they do not have a conflict of interest in teaching this course.</i> <i>- This course does not have commercial support or sponsorship.</i>
Registered Environmental Health Specialist/Registered Sanitarian (REHS/RS) and Certified Environmental Health Technician (CEHT)	14.0 contact hours	National Environmental Health Association	1. Attend entire training. 2. Fill out NEHA Continuing Education Form, have one of the instructors sign, and send to NEHA.
Pest Control Applicator and Registered Technician	2.0 Continuing Certification Hours (CCH)	Office of Indiana State Chemist and Seed Commissioner/Purdue University	1. Attend at least Day 1 of the training. 2. Sign the attendance sheet provided by the Office of Indiana State Chemist (include Indiana license number).
ASHI Home Inspector	2.0 Membership Renewal Credits (MCR)	American Society of Home Inspectors (ASHI)	1. Be a member of ASHI. 2. NCHH provides a signed certificate of completion showing the number of earned MRCs.
NACHI Home Inspector	15.0 Contact hours	National Association of Certified Home Inspectors	NACHI members are required to load all details of their continuing educational accomplishments to the <a href="#">members-only education log</a> . All other proof of completion of the course should be retained by the member.
Social Workers	13.25 CEUs	National Association of Social Workers	1. Attend entire training and initial sign-in sheet. 2. Complete and submit evaluation form. 3. NCHH provides a signed certificate of completion showing the number of earned contact hours.



Certified Industrial Hygienist / Certified Associate Industrial Hygienist	2.0 CM points	American Board of Industrial Hygiene (ABIH)	<ol style="list-style-type: none"> <li>1. Be a certified by ABIH</li> <li>2. Attend entire training and initial sign-in sheet.</li> <li>3. Complete and submit evaluation form.</li> <li>4. NCHH provides a signed certificate of completion showing the number of earned contact hours.</li> </ol>
Indoor Air Quality Professionals and Technicians	15 RCs (recertification credits)	American Indoor Air Quality Council (AmIAQC)	<ol style="list-style-type: none"> <li>1. Attend entire training and initial sign-in sheet.</li> <li>2. Complete and submit evaluation form.</li> <li>3. NCHH provides a signed certificate of completion showing the number of earned contact hours.</li> </ol>